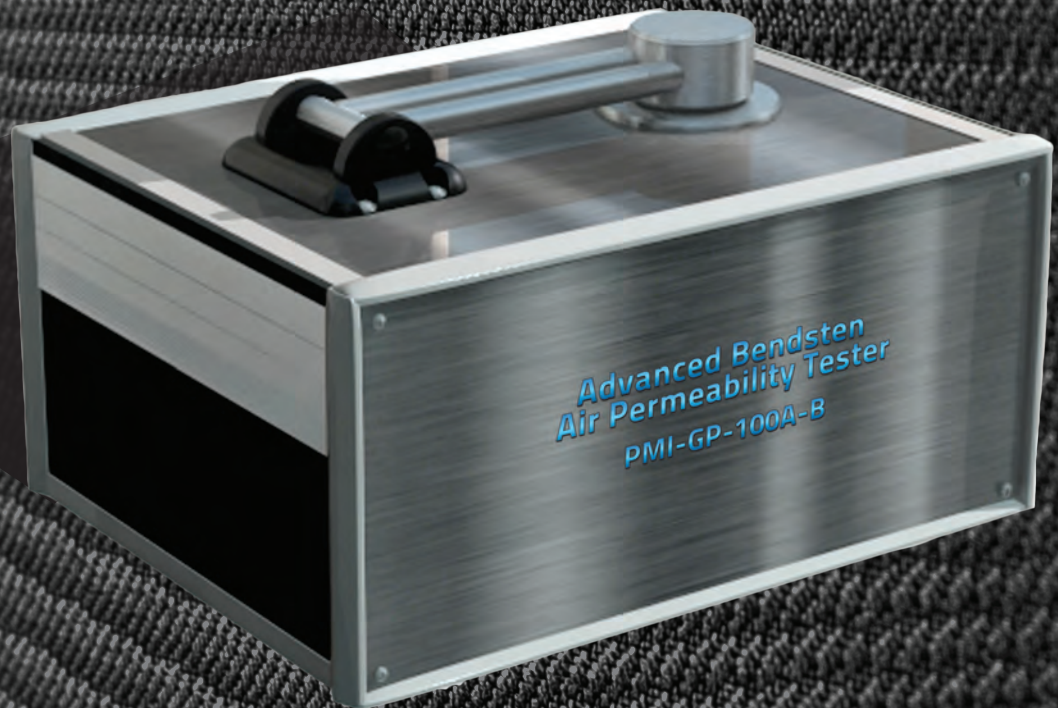


THE PMI ADVANCED BENDSTEN PERMEABILITY & SURFACE ROUGHNESS TESTER

GP-100A-B

The PMI fully automated Advanced Bendsten Permeability & Surface Roughness Tester is able to measure air permeability and smoothness according to standards ISO 28791-2 and permeability to ISO 5636-3 and 5 with digital display.



Not just products...*solutions!*

Description

Industries worldwide utilize permeability and surface roughness testers for R&D and quality control. Applicable industries include: Automotive, Battery, Biotechnology Separator, Ceramic, Filtration, Fuel Cells, Geotextiles, Nonwovens, Paper, and Textiles.

Principle

The Advanced Bendsten Air Permeability and Surface Roughness Tester is used to determine the permeability and surface roughness of porous solids. A gas such as air is forced to flow through the test sample. Measurements of the steady-state flow rate and the corresponding pressure drops provide the necessary data for calculation of the permeability using darcy and other units.

Optional Features

- Permeability measurement of high flow rate samples
- Permeability of samples under compressive stress
- Use of elevated test temperatures and a wide variety of gases

Features

- Windows-based software handles all control, measurement, data collection, and report generation; complete manual control also possible
- Comes with computer equipt with real-time graphical test display depicts testing status and results
- Non-destructive testing
 - Length of test approximately 1 minute
- Wide range of acceptable sample types and sizes
 - Multiple sample chambers available
- Minimal maintenance required
 - Units in Darcy, Frazier, Gurley, and many others
- Completely automated air permeability tester
 - Pneumatic Clamping

Includes: PC, Compressor, 2 Measuring Heads, Gurley Apparatus, Soap-bubble meter, Soap Solution, Barometer, Sealing Fluid, and Timer

Specifications*

- Bendsten Roughness Value Range: 50mL/min and 500mL/min
- Air Permeance Range: 0.35 $\mu\text{m}/(\text{Pa}\cdot\text{s})$ and 15 $\mu\text{m}/(\text{Pa}\cdot\text{s})$ and 0.1 $\mu\text{m}/(\text{Pa}\cdot\text{s})$ and 100 $\mu\text{m}/(\text{Pa}\cdot\text{s})$
- Sample Size: 100mm x 100mm
- Pressure Range: Up to (127 \pm 0.02)kPa
- Pressurizing Gas: Clean, dry or compressed air (Or any other nonflammable and noncorrosive gas)
- Pressure Transducer Range: 0 – 200 kPa
- Reservoir Volume: 150 litres
- Pressure controller: 1.47 \pm 0.02 kPa
- Accuracy: 0.15% of reading
- Mass Flow Transducer Range (3 options): 5-150 \pm 2 ml/min, 50-500 \pm 5 ml/min, 300-3000 \pm 20 ml/min
- Power Requirements: 220-230V, 50Hz
- Dimensions: 30" H x 19" W x 18.5" D
- Weight: 100 lbs
- Permeability measurement according to ISO 5636-3 and 5 standards

* Other specifications for this machine are available. Specifications are subject to change without notice.

Software Screenshots

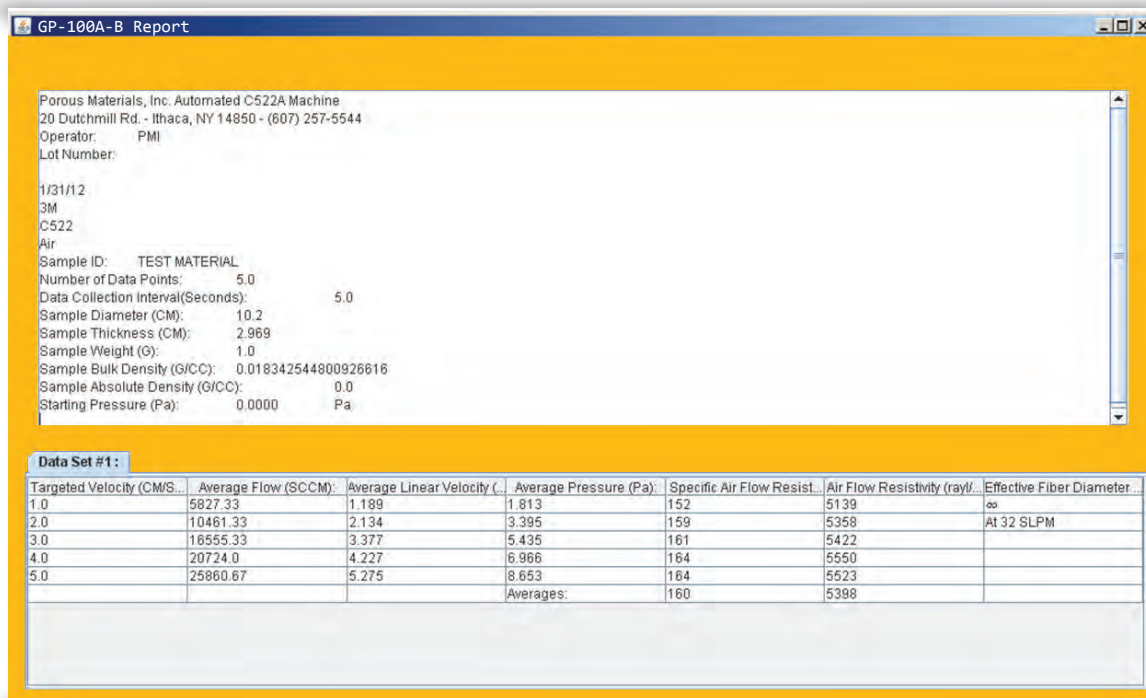


Figure 1
PMI Software Report Screen

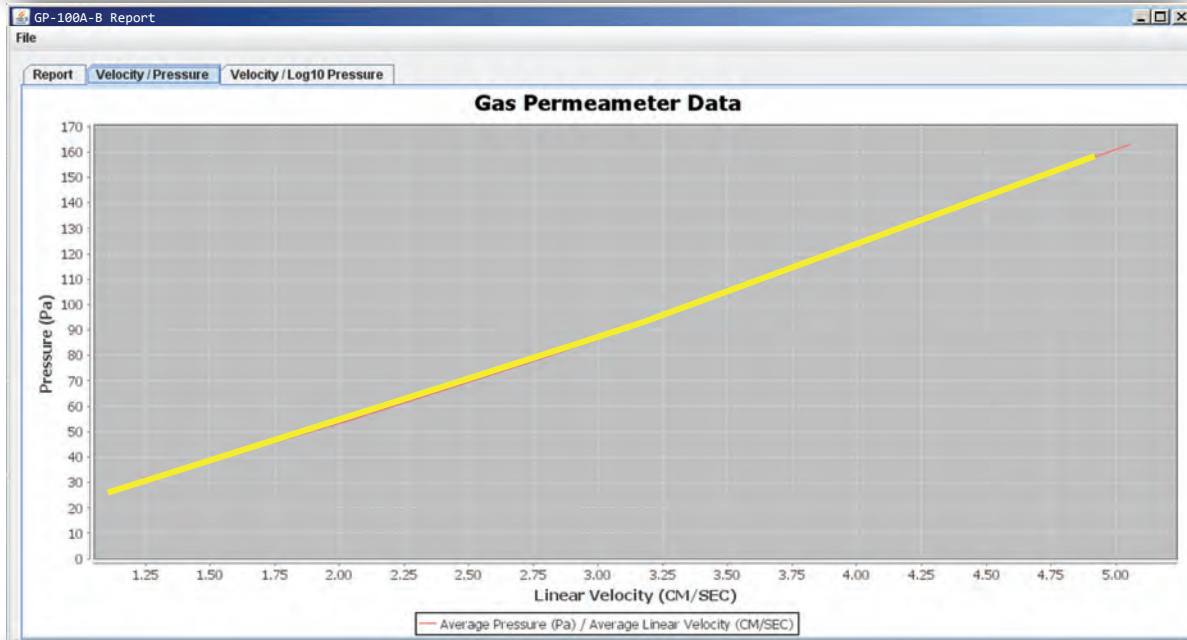


Figure 2
PMI Software Data Screen

Sales & Services

Our sales team is dedicated to helping our customers find which machine is right for their situation. We also offer custom machines for customers with unique needs. To find out what we can do for you, contact us.

We are committed to customer support including specific service products, short response times & customer specific solutions. To quickly & flexibly meet our customer's requirement, we offer a comprehensive range of services.



Customize your machine today!



20 Dutch Mill Rd, Ithaca, NY 14850, USA
Toll Free (US & Canada): 1-800-TALK-PMI (1-800-825-5764)
Phone: 607-257-5544 Fax: 607-257-5639

Email: info@pmiapp.com www.pmiapp.com

The most advanced, accurate, easy to use
and reproducible porometers in the world.



20 Dutch Mill Rd, Ithaca, NY 14850, USA
Toll Free (US & Canada): 1-800-TALK-PMI (1-800-825-5764)
Phone: 607-257-5544 Fax: 607-257-5639

Email: info@pmiapp.com

www.pmiapp.com